



Random Vibration Test

Customer Name
Company Name
123 Main Street
Anytown USA

PURCHASE ORDER: P003921

JOB NO: 2031

XYZ Corp. letters, reports and data apply only to the samples tested and are not necessarily an indication of the qualities associated with apparently identical or similar products. *XYZ Corp.* reports shall not be reproduced except in full and with written approval of the customer and/or *XYZ Corp.*

PRODUCT TESTED:

Brass Bar

DATE(S) TESTED:

3/12/2008

TEST PROCEDURE:

Procedure 31-d

DATA AND OBSERVATIONS:

No defects observed

ACCEPTANCE LEVEL:

No critical failures

TEST RESULTS:

PASSED

TEST EQUIPMENT:

VR5200

Accelerometers:

Sensitivity	S/N and Cal. date
Ch1: 101.399 mV/G	(0002828, 03/28/07)
Ch2: 98.559 mV/G	(11959, 12/04/07)

Controller:

S/N 0396ec Calibration Due Date: Mar 08, 2009

APPROVAL SIGNATURE SECTION:

Written By:

Technician Name, Laboratory Technician

3/12/2008
Date

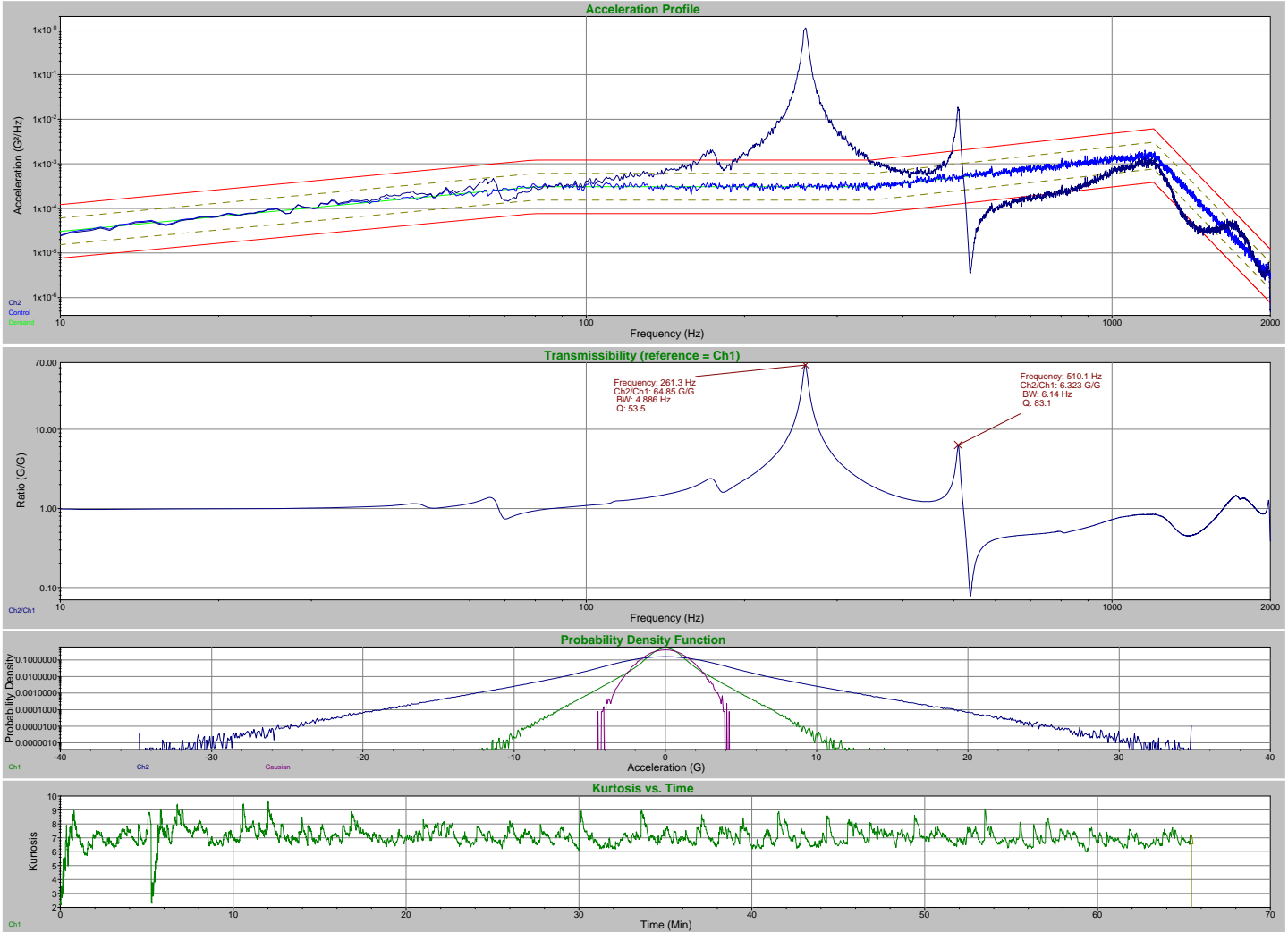
Approved By:

Laboratory Manager

Date

APPENDIX A (Graphs, Test Data, Pictures)

Data: C:\VibrationVIEW\Data\2008-03\Sample Report\2008Mar12-1141-0001.vrd
 Test: C:\VibrationVIEW\Profiles\Sample Report - Random.vrp
 Data stored on Mar 12, 2008 12:47:34
 Sample Report
End of Test



Breakpoint table:

Frequency	G ² /Hz	dB/Octave
10 Hz	3.037e-005	3.333
80 Hz	0.0003037	0
350 Hz	0.0003037	3.932
1200 Hz	0.001518	-36.62
2000 Hz	3.037e-006	

Test level schedule:

	Duration	Level	
1)	0:05:00	100 %	
2)	Enter Form		
3)	Start Recorder		
4)	1:00:00	100 %	(Memorized drive)
5)	Enter Form		
6)	Stop Recorder		
7)	View Report		

** Test started Mar 12, 2008 11:41:07, running for 1:05:26

** Current level: 4, running at 100 % for 1:00:00 of 1:00:00

Measurements:

Demand: 1 G RMS 0.007633 in pk-pk
Control: 1.015 G RMS 0.007795 in pk-pk
Ch1: 0.9664 G RMS Ch1 in-band: 1.015 G RMS
Ch2: 2.952 G RMS Ch2 in-band: 3.198 G RMS
Ch3: 0.009035 G RMS Ch3 in-band: 0.001914 G RMS
Ch4: 0.01208 G RMS Ch4 in-band: 0.001865 G RMS
Drive voltage: 0.03976 Vrms
System gain: 0.03916 Volts/G

Pictures:

Test notes:

Date	Level	Channel	Full-Band RMS	In-Band RMS	Peak	Kurtosis
Mar 12, 2008 11:41:07	Starting					
Mar 12, 2008 11:41:23	Running					
Mar 12, 2008 11:42:07	Level 1	Ch1	1.075 G RMS	1.024 G RMS	7.72 G Peak	7.05
Mar 12, 2008 11:42:07	Level 1	Ch2	3.322 G RMS	3.288 G RMS	12.84 G Peak	5.64
Mar 12, 2008 11:43:07	Level 1	Ch1	1.032 G RMS	1.002 G RMS	7.293 G Peak	7.09
Mar 12, 2008 11:43:07	Level 1	Ch2	3.173 G RMS	3.182 G RMS	17.7 G Peak	5.56
Mar 12, 2008 11:44:07	Level 1	Ch1	1.028 G RMS	1.012 G RMS	8 G Peak	6.5
Mar 12, 2008 11:44:07	Level 1	Ch2	3.484 G RMS	3.292 G RMS	17.89 G Peak	8.03
Mar 12, 2008 11:45:07	Level 1	Ch1	1.006 G RMS	1.03 G RMS	6.911 G Peak	7.5
Mar 12, 2008 11:45:07	Level 1	Ch2	3.276 G RMS	3.353 G RMS	16.89 G Peak	7.13
Mar 12, 2008 11:46:07	Level 1	Ch1	1.033 G RMS	1.021 G RMS	11.39 G Peak	7.49
Mar 12, 2008 11:46:07	Level 1	Ch2	3.256 G RMS	3.304 G RMS	17.81 G Peak	5.22
Mar 12, 2008 11:46:22	Changing Level					
Mar 12, 2008 11:46:22	Paused					
Mar 12, 2008 11:47:25	Changing Level					
Mar 12, 2008 11:47:25	Level 4	Ch1	0.003655 G RMS	0.003499 G RMS	0.01072 G Peak	2.15
Mar 12, 2008 11:47:25	Level 4	Ch2	0.01077 G RMS	0.007873 G RMS	0.02348 G Peak	2.32
Mar 12, 2008 11:47:35	Running					
Mar 12, 2008 11:48:25	Level 4	Ch1	1.026 G RMS	1.006 G RMS	7.48 G Peak	7.32
Mar 12, 2008 11:48:25	Level 4	Ch2	3.695 G RMS	3.38 G RMS	23.66 G Peak	6.95
Mar 12, 2008 11:49:25	Level 4	Ch1	1.077 G RMS	1.041 G RMS	7.102 G Peak	7.69
Mar 12, 2008 11:49:25	Level 4	Ch2	3.603 G RMS	3.5 G RMS	17.19 G Peak	6.7
Mar 12, 2008 11:50:25	Level 4	Ch1	1.041 G RMS	1.054 G RMS	5.197 G Peak	7.52
Mar 12, 2008 11:50:25	Level 4	Ch2	3.288 G RMS	3.402 G RMS	14.03 G Peak	6.3
Mar 12, 2008 11:51:25	Level 4	Ch1	0.9061 G RMS	1.004 G RMS	5.99 G Peak	6.8
Mar 12, 2008 11:51:25	Level 4	Ch2	3.013 G RMS	3.338 G RMS	15.04 G Peak	7.19
Mar 12, 2008 11:52:25	Level 4	Ch1	1.009 G RMS	1.006 G RMS	7.7 G Peak	6.73
Mar 12, 2008 11:52:25	Level 4	Ch2	3.329 G RMS	3.38 G RMS	17.59 G Peak	6.71
Mar 12, 2008 11:53:25	Level 4	Ch1	0.9765 G RMS	0.9964 G RMS	8.335 G Peak	7.32
Mar 12, 2008 11:53:25	Level 4	Ch2	3.083 G RMS	3.256 G RMS	18.28 G Peak	6.68
Mar 12, 2008 11:54:25	Level 4	Ch1	1.026 G RMS	1.012 G RMS	7.205 G Peak	8.31
Mar 12, 2008 11:54:25	Level 4	Ch2	3.467 G RMS	3.426 G RMS	20.79 G Peak	6.86
Mar 12, 2008 11:55:25	Level 4	Ch1	1.051 G RMS	1.014 G RMS	5.811 G Peak	6.75
Mar 12, 2008 11:55:25	Level 4	Ch2	3.626 G RMS	3.389 G RMS	13.43 G Peak	6.3
Mar 12, 2008 11:56:25	Level 4	Ch1	0.9831 G RMS	1.002 G RMS	6.12 G Peak	6.79
Mar 12, 2008 11:56:25	Level 4	Ch2	3.21 G RMS	3.313 G RMS	11.74 G Peak	6.97
Mar 12, 2008 11:57:25	Level 4	Ch1	1.031 G RMS	1.006 G RMS	6.177 G Peak	7.3
Mar 12, 2008 11:57:25	Level 4	Ch2	3.186 G RMS	3.262 G RMS	19.29 G Peak	5.96
Mar 12, 2008 11:58:25	Level 4	Ch1	0.9953 G RMS	0.9988 G RMS	7.484 G Peak	6.7
Mar 12, 2008 11:58:25	Level 4	Ch2	3.29 G RMS	3.285 G RMS	16 G Peak	6.32
Mar 12, 2008 11:59:25	Level 4	Ch1	1.002 G RMS	1.001 G RMS	5.743 G Peak	7.54
Mar 12, 2008 11:59:25	Level 4	Ch2	3.218 G RMS	3.245 G RMS	12.24 G Peak	6.03
Mar 12, 2008 12:00:25	Level 4	Ch1	0.9566 G RMS	0.9689 G RMS	9.264 G Peak	7.09
Mar 12, 2008 12:00:25	Level 4	Ch2	3.219 G RMS	3.132 G RMS	25.67 G Peak	8.37
Mar 12, 2008 12:01:25	Level 4	Ch1	1.051 G RMS	1.003 G RMS	7.388 G Peak	6.69
Mar 12, 2008 12:01:25	Level 4	Ch2	3.538 G RMS	3.299 G RMS	21.3 G Peak	5.85

Mar 12, 2008 12:02:25	Level 4	Ch1	1.008 G RMS	1.005 G RMS	6.698 G Peak	6.88
Mar 12, 2008 12:02:25	Level 4	Ch2	3.024 G RMS	3.223 G RMS	14.15 G Peak	5.82
Mar 12, 2008 12:03:25	Level 4	Ch1	0.9827 G RMS	0.9903 G RMS	8.53 G Peak	7.78
Mar 12, 2008 12:03:25	Level 4	Ch2	3.178 G RMS	3.213 G RMS	20.84 G Peak	6.31
Mar 12, 2008 12:04:25	Level 4	Ch1	1.017 G RMS	1.012 G RMS	6.865 G Peak	7.3
Mar 12, 2008 12:04:25	Level 4	Ch2	3.242 G RMS	3.299 G RMS	16.96 G Peak	6.05
Mar 12, 2008 12:05:25	Level 4	Ch1	0.9498 G RMS	0.9719 G RMS	9.073 G Peak	6.91
Mar 12, 2008 12:05:25	Level 4	Ch2	2.9 G RMS	3.086 G RMS	15.18 G Peak	7.16
Mar 12, 2008 12:06:25	Level 4	Ch1	0.968 G RMS	0.998 G RMS	6.346 G Peak	7.64
Mar 12, 2008 12:06:25	Level 4	Ch2	3.029 G RMS	3.157 G RMS	14.16 G Peak	5.52
Mar 12, 2008 12:07:25	Level 4	Ch1	0.9609 G RMS	0.9899 G RMS	5.296 G Peak	6.64
Mar 12, 2008 12:07:25	Level 4	Ch2	3.116 G RMS	3.174 G RMS	14.78 G Peak	5.82
Mar 12, 2008 12:08:25	Level 4	Ch1	1.011 G RMS	1.002 G RMS	6.921 G Peak	7.21
Mar 12, 2008 12:08:25	Level 4	Ch2	3.353 G RMS	3.271 G RMS	19.61 G Peak	6.85
Mar 12, 2008 12:09:26	Level 4	Ch1	1.057 G RMS	1.021 G RMS	9.707 G Peak	7.05
Mar 12, 2008 12:09:26	Level 4	Ch2	3.271 G RMS	3.233 G RMS	21.32 G Peak	5.55
Mar 12, 2008 12:10:26	Level 4	Ch1	1.015 G RMS	1.052 G RMS	7.262 G Peak	7.04
Mar 12, 2008 12:10:26	Level 4	Ch2	3.306 G RMS	3.373 G RMS	17.82 G Peak	6.49
Mar 12, 2008 12:11:25	Level 4	Ch1	1.009 G RMS	1.016 G RMS	7.721 G Peak	7.04
Mar 12, 2008 12:11:25	Level 4	Ch2	3.234 G RMS	3.267 G RMS	18.39 G Peak	5.79
Mar 12, 2008 12:12:26	Level 4	Ch1	1.01 G RMS	1.006 G RMS	7.536 G Peak	7.66
Mar 12, 2008 12:12:26	Level 4	Ch2	3.142 G RMS	3.191 G RMS	14.72 G Peak	6.66
Mar 12, 2008 12:13:25	Level 4	Ch1	1.075 G RMS	1.025 G RMS	7.503 G Peak	6.3
Mar 12, 2008 12:13:25	Level 4	Ch2	3.275 G RMS	3.251 G RMS	16.32 G Peak	5.82
Mar 12, 2008 12:14:26	Level 4	Ch1	1.067 G RMS	1.041 G RMS	6.518 G Peak	6.37
Mar 12, 2008 12:14:26	Level 4	Ch2	3.341 G RMS	3.338 G RMS	11.76 G Peak	5.23
Mar 12, 2008 12:15:26	Level 4	Ch1	0.9781 G RMS	1.016 G RMS	7.077 G Peak	6.91
Mar 12, 2008 12:15:26	Level 4	Ch2	2.946 G RMS	3.197 G RMS	14.14 G Peak	5.71
Mar 12, 2008 12:16:25	Level 4	Ch1	0.9862 G RMS	1.024 G RMS	5.172 G Peak	7.14
Mar 12, 2008 12:16:25	Level 4	Ch2	3.245 G RMS	3.301 G RMS	22.96 G Peak	7.44
Mar 12, 2008 12:17:26	Level 4	Ch1	0.9974 G RMS	1.014 G RMS	6.675 G Peak	7.06
Mar 12, 2008 12:17:26	Level 4	Ch2	3.154 G RMS	3.188 G RMS	20.08 G Peak	5.81
Mar 12, 2008 12:18:26	Level 4	Ch1	0.9687 G RMS	1.005 G RMS	5.5 G Peak	6.96
Mar 12, 2008 12:18:26	Level 4	Ch2	3.257 G RMS	3.26 G RMS	12.71 G Peak	10.7
Mar 12, 2008 12:19:26	Level 4	Ch1	1.006 G RMS	1.01 G RMS	5.997 G Peak	7.87
Mar 12, 2008 12:19:26	Level 4	Ch2	3.29 G RMS	3.293 G RMS	15.81 G Peak	6.54
Mar 12, 2008 12:20:26	Level 4	Ch1	1.026 G RMS	1.019 G RMS	9.709 G Peak	7.71
Mar 12, 2008 12:20:26	Level 4	Ch2	3.412 G RMS	3.319 G RMS	19.92 G Peak	6.96
Mar 12, 2008 12:21:26	Level 4	Ch1	0.9796 G RMS	0.9785 G RMS	6.631 G Peak	6.65
Mar 12, 2008 12:21:26	Level 4	Ch2	2.995 G RMS	3.097 G RMS	13.14 G Peak	5.21
Mar 12, 2008 12:22:26	Level 4	Ch1	1.035 G RMS	0.9986 G RMS	6.934 G Peak	6.4
Mar 12, 2008 12:22:26	Level 4	Ch2	3.324 G RMS	3.241 G RMS	14.52 G Peak	6.17
Mar 12, 2008 12:23:26	Level 4	Ch1	1.039 G RMS	1.013 G RMS	9.222 G Peak	6.64
Mar 12, 2008 12:23:26	Level 4	Ch2	3.449 G RMS	3.355 G RMS	13.85 G Peak	6.16
Mar 12, 2008 12:24:26	Level 4	Ch1	1.028 G RMS	1.008 G RMS	7.434 G Peak	6.82
Mar 12, 2008 12:24:26	Level 4	Ch2	3.318 G RMS	3.228 G RMS	13.72 G Peak	7.12
Mar 12, 2008 12:25:26	Level 4	Ch1	0.9868 G RMS	1.004 G RMS	5.315 G Peak	6.72
Mar 12, 2008 12:25:26	Level 4	Ch2	3.168 G RMS	3.147 G RMS	11.1 G Peak	5.82
Mar 12, 2008 12:26:26	Level 4	Ch1	1.015 G RMS	1.015 G RMS	7.654 G Peak	6.76
Mar 12, 2008 12:26:26	Level 4	Ch2	3.251 G RMS	3.269 G RMS	17.98 G Peak	5.94
Mar 12, 2008 12:27:26	Level 4	Ch1	0.9892 G RMS	1.005 G RMS	6.578 G Peak	6.56
Mar 12, 2008 12:27:26	Level 4	Ch2	3.255 G RMS	3.174 G RMS	17.74 G Peak	8.29
Mar 12, 2008 12:28:26	Level 4	Ch1	1.023 G RMS	1.029 G RMS	8.182 G Peak	7.33
Mar 12, 2008 12:28:26	Level 4	Ch2	3.29 G RMS	3.347 G RMS	16.73 G Peak	7.52
Mar 12, 2008 12:29:26	Level 4	Ch1	0.9938 G RMS	1.005 G RMS	5.713 G Peak	6.9
Mar 12, 2008 12:29:26	Level 4	Ch2	3.348 G RMS	3.315 G RMS	16.92 G Peak	7.39
Mar 12, 2008 12:30:26	Level 4	Ch1	1.016 G RMS	1.002 G RMS	6.256 G Peak	6.51
Mar 12, 2008 12:30:26	Level 4	Ch2	3.417 G RMS	3.361 G RMS	15.13 G Peak	7.24
Mar 12, 2008 12:31:26	Level 4	Ch1	1.018 G RMS	1.009 G RMS	7.821 G Peak	6.7
Mar 12, 2008 12:31:26	Level 4	Ch2	3.203 G RMS	3.246 G RMS	18.85 G Peak	5.69
Mar 12, 2008 12:32:26	Level 4	Ch1	1.052 G RMS	1.03 G RMS	7.687 G Peak	7.01
Mar 12, 2008 12:32:26	Level 4	Ch2	3.338 G RMS	3.286 G RMS	27.23 G Peak	6.33

Mar 12, 2008 12:33:26	Level 4	Ch1	1.036 G RMS	1.019 G RMS	8.087 G Peak	6.83
Mar 12, 2008 12:33:26	Level 4	Ch2	3.243 G RMS	3.246 G RMS	18.94 G Peak	5.88
Mar 12, 2008 12:34:26	Level 4	Ch1	0.956 G RMS	0.9732 G RMS	4.203 G Peak	6.77
Mar 12, 2008 12:34:26	Level 4	Ch2	3.017 G RMS	3.112 G RMS	9.271 G Peak	6.45
Mar 12, 2008 12:35:26	Level 4	Ch1	0.9937 G RMS	0.9962 G RMS	6.886 G Peak	6.58
Mar 12, 2008 12:35:26	Level 4	Ch2	3.133 G RMS	3.18 G RMS	14.14 G Peak	5.32
Mar 12, 2008 12:36:26	Level 4	Ch1	0.9943 G RMS	0.9929 G RMS	7.154 G Peak	6.67
Mar 12, 2008 12:36:26	Level 4	Ch2	3.183 G RMS	3.175 G RMS	11.7 G Peak	5.89
Mar 12, 2008 12:37:26	Level 4	Ch1	0.9354 G RMS	0.9957 G RMS	6.42 G Peak	6.62
Mar 12, 2008 12:37:26	Level 4	Ch2	2.891 G RMS	3.171 G RMS	9.151 G Peak	7.25
Mar 12, 2008 12:38:26	Level 4	Ch1	0.9598 G RMS	0.9915 G RMS	5.618 G Peak	6.33
Mar 12, 2008 12:38:26	Level 4	Ch2	3.131 G RMS	3.25 G RMS	16.1 G Peak	5.76
Mar 12, 2008 12:39:26	Level 4	Ch1	0.9907 G RMS	0.9965 G RMS	6.395 G Peak	7.37
Mar 12, 2008 12:39:26	Level 4	Ch2	3.215 G RMS	3.175 G RMS	10.44 G Peak	6.73
Mar 12, 2008 12:40:26	Level 4	Ch1	0.9952 G RMS	1.002 G RMS	7.783 G Peak	7.51
Mar 12, 2008 12:40:26	Level 4	Ch2	3.211 G RMS	3.222 G RMS	17.55 G Peak	6.08
Mar 12, 2008 12:41:26	Level 4	Ch1	1.008 G RMS	0.9847 G RMS	6.194 G Peak	6.11
Mar 12, 2008 12:41:26	Level 4	Ch2	3.023 G RMS	3.068 G RMS	13.89 G Peak	5.84
Mar 12, 2008 12:42:27	Level 4	Ch1	1.043 G RMS	1.005 G RMS	6.544 G Peak	6.65
Mar 12, 2008 12:42:27	Level 4	Ch2	3.469 G RMS	3.233 G RMS	17.77 G Peak	5.39
Mar 12, 2008 12:43:27	Level 4	Ch1	0.9452 G RMS	0.9945 G RMS	8.11 G Peak	6.7
Mar 12, 2008 12:43:27	Level 4	Ch2	3.095 G RMS	3.196 G RMS	18.69 G Peak	6.78
Mar 12, 2008 12:44:26	Level 4	Ch1	1.04 G RMS	0.9944 G RMS	7.947 G Peak	7.16
Mar 12, 2008 12:44:26	Level 4	Ch2	3.408 G RMS	3.209 G RMS	28.27 G Peak	7.48
Mar 12, 2008 12:45:27	Level 4	Ch1	0.9923 G RMS	1.003 G RMS	5.155 G Peak	6.63
Mar 12, 2008 12:45:27	Level 4	Ch2	2.957 G RMS	3.14 G RMS	12.59 G Peak	5.85
Mar 12, 2008 12:46:26	Level 4	Ch1	1.036 G RMS	1.033 G RMS	8.602 G Peak	7.18
Mar 12, 2008 12:46:26	Level 4	Ch2	3.263 G RMS	3.298 G RMS	16.53 G Peak	5.79
Mar 12, 2008 12:47:27	Level 4	Ch1	0.9626 G RMS	1.019 G RMS	5.285 G Peak	6.69
Mar 12, 2008 12:47:27	Level 4	Ch2	2.922 G RMS	3.233 G RMS	9.732 G Peak	6.56
Mar 12, 2008 12:47:34	Changing Level					
Mar 12, 2008 12:47:34	Paused					
Mar 12, 2008 13:11:53	End of Test					

—